

River Courses

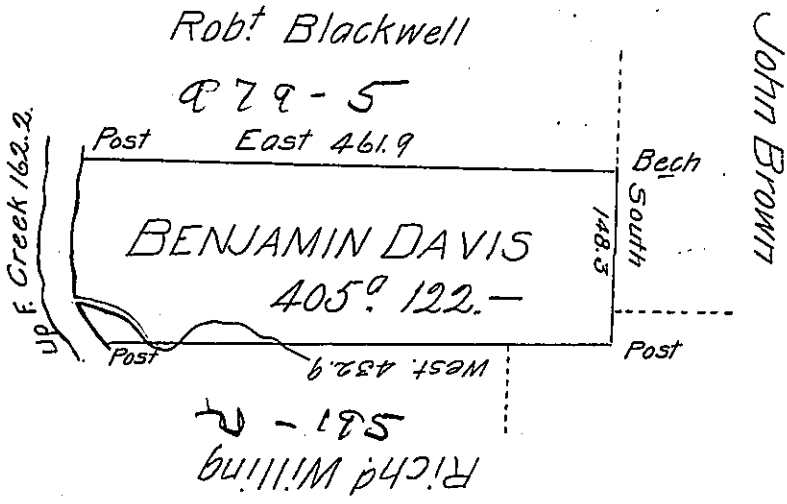
N 47 1/2 W. 36.

N. 20 W. 26.

North 54.5

N. 14° E 12.

N. 6° E. 33.7
P^s/62.2



Situate on the East Side of and adjoining the French Creek in Allegheny County
 Containing 405° 122 P^s and Allowance of Six P Cent for Roads & C.
 Surveyed the 12th November 1794. In pursuance of a Warrant Dated
 the 13th Day of April 1792.

W^m Power D.Y.S.

To Danl Brodhead Esq^r }
 Surveyor General }

IN TESTIMONY that the above is a copy of the original remaining on file in
 the Department of Internal Affairs of Pennsylvania, made
 conformably to an Act of Assembly approved the 16th day of
 February, 1833, I have hereunto set my Hand and caused
 the Seal of said Department to be affixed at Harrisburg,
 this twentythird day of June 1904.

Isaac B. Brown
 Secretary of Internal Affairs.